

New Zealand

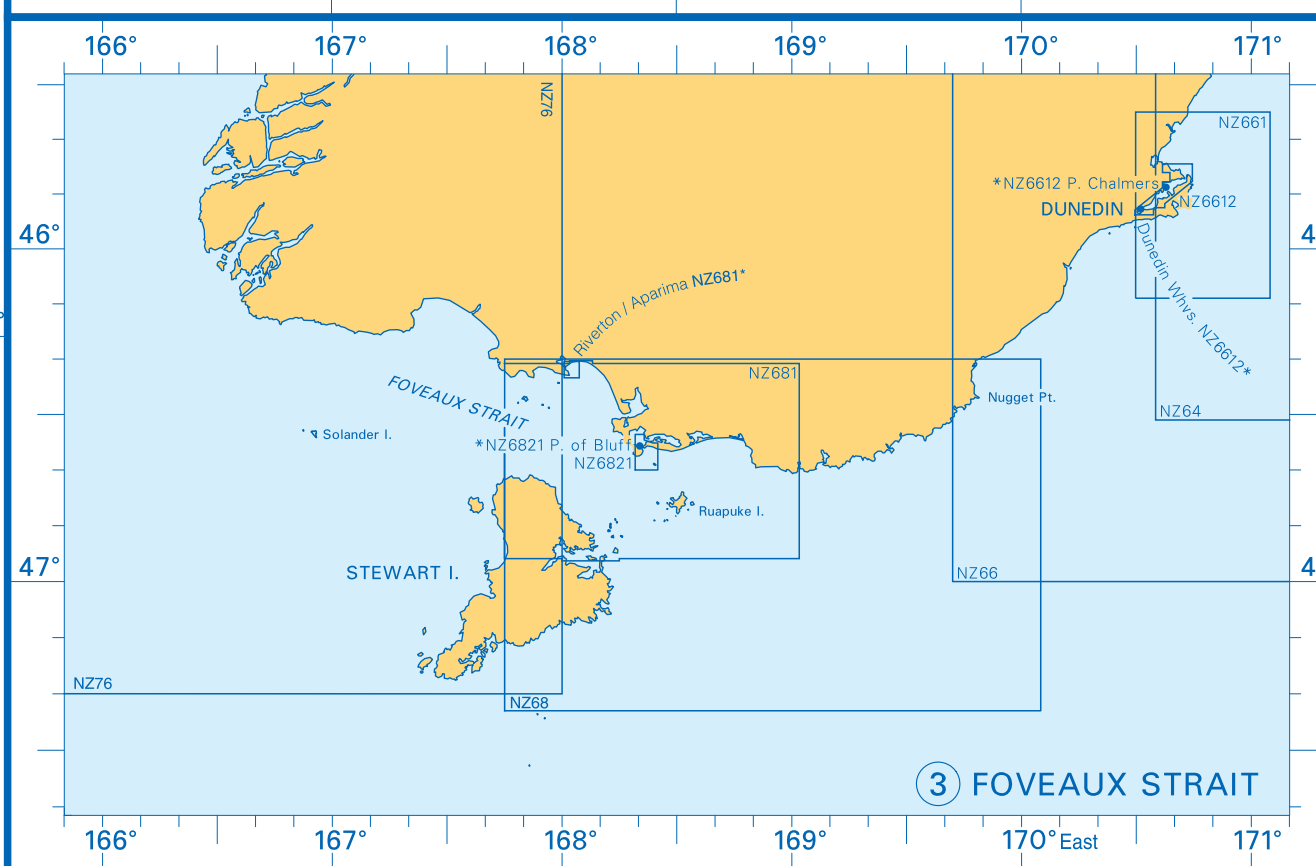
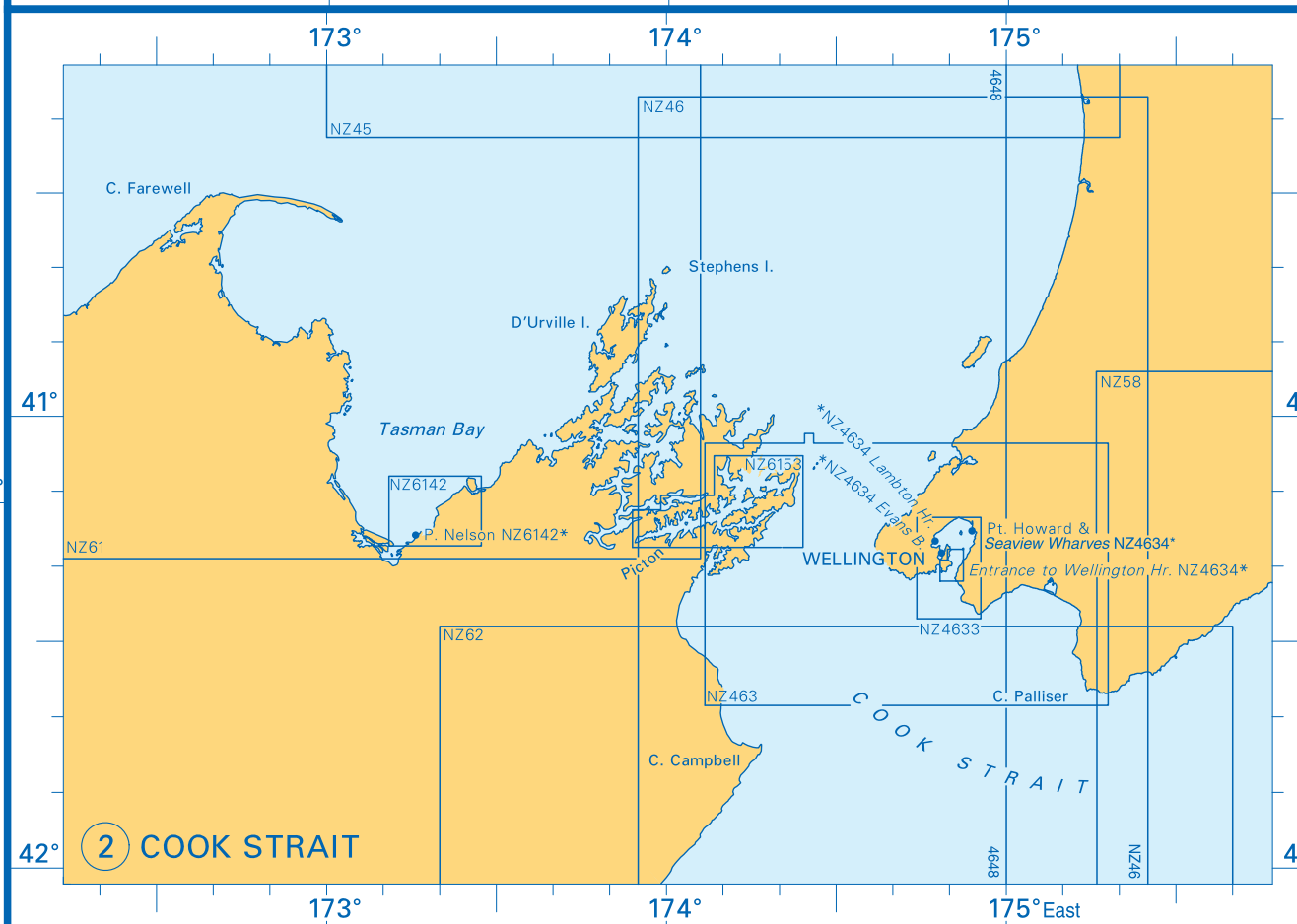
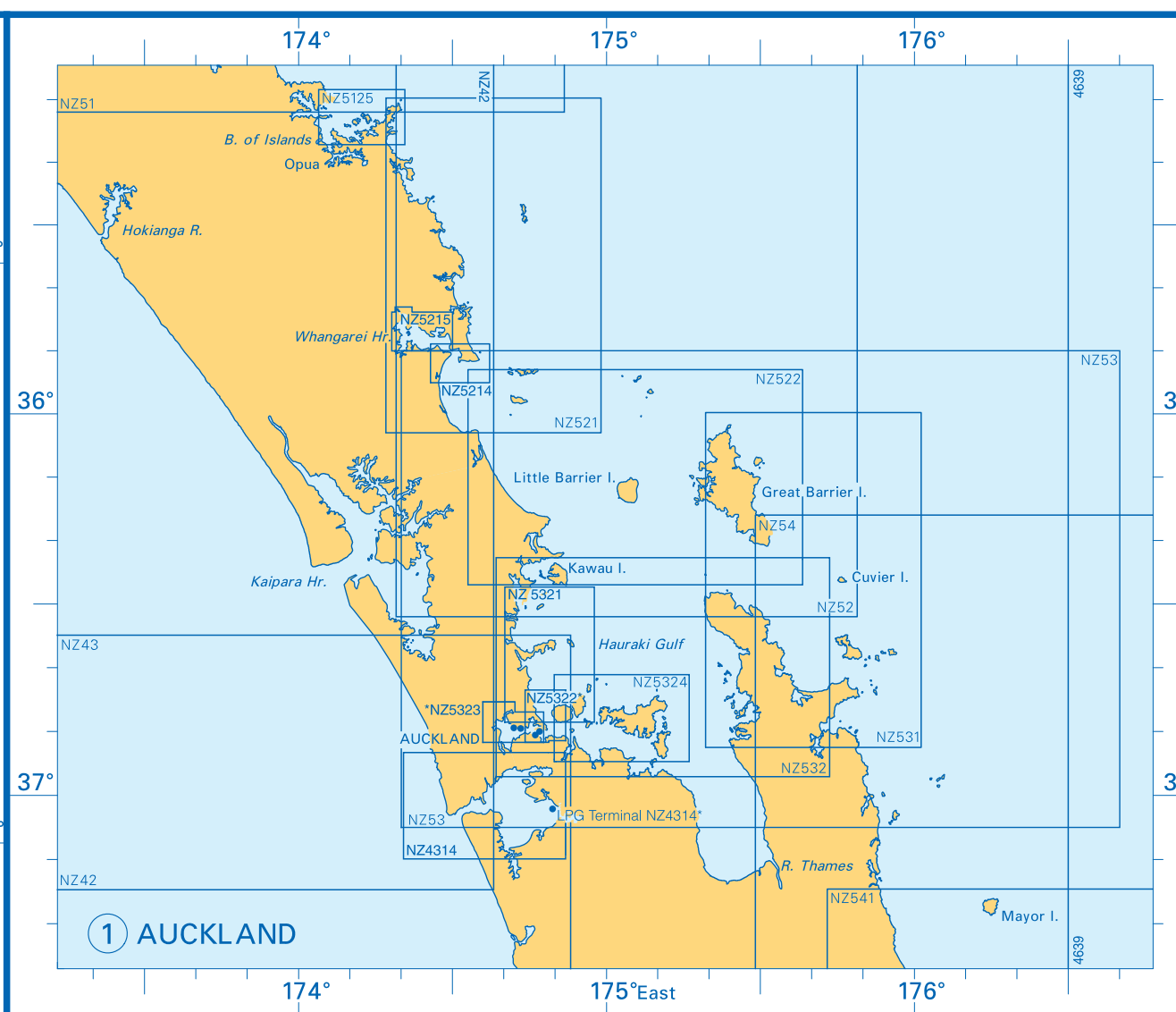
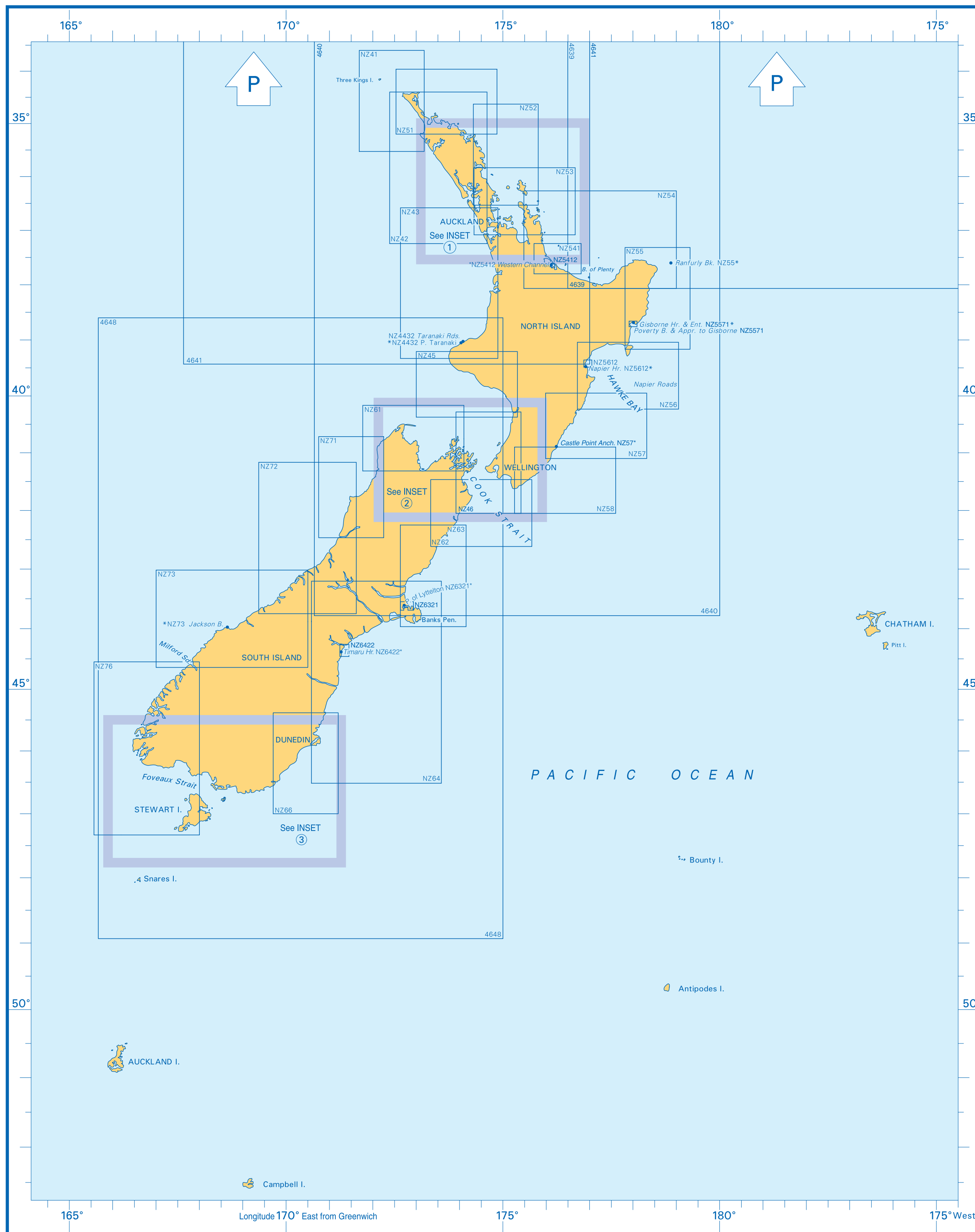
Chart No.	Title of Chart or Plan	Natural Scale 1:	Date of Publication	New Edition
NZ 41	North Cape	200,000	Oct. 1972	Jan. 2003
NZ 42	Cape Reinga to Manukau Harbour	300,000	Oct. 1981	May 2002
NZ 43	Manukau Harbour to Cape Egmont	300,000	Oct. 1980	June 2007
NZ 45	Cape Egmont to Rangitikei River	200,000	Jan. 1989	June 2007
NZ 46	Cook Strait	200,000	Jan. 1989	July 2000
NZ 51	Tauroa Point to Cape Brett	200,000	Apr. 1978	Apr. 2001
NZ 52	Cape Brett to Cuvier Island	200,000	Oct. 1974	July 2004
NZ 53	Bream Head to Slipper Island including Hauraki Gulf	200,000	Oct. 1992	Mar. 2002
NZ 54	Cuvier Island to East Cape	300,000	Oct. 1984	July 1997
NZ 55	Cape Runaway to Table Cape	200,000	Apr. 1998	-
	Ranfurlly Bank	70,000		
NZ 56	Table Cape to Blackhead Point	200,000	Oct. 1989	Sept. 2001
NZ 57	Blackhead Point to Castle Point	200,000	Oct. 1989	Sept. 2001
	Castle Point Anchorage	15,000		
NZ 58	Castle Point to Cape Palliser	200,000	Jan. 1989	Sept. 2001
NZ 61	Karamea River to Stephens Island	200,000	Oct. 1984	Apr. 1999
NZ 62	Cape Palliser to Kaikoura Peninsula	200,000	Apr. 1998	-
NZ 63	Kaikoura Peninsula to Banks Peninsula	200,000	Apr. 1998	-
NZ 64	Banks Peninsula to Otago Peninsula	400,000	July 1979	Mar. 2003
NZ 66	Katiki Point to Nugget Point	200,000	Oct. 1989	Jan. 2003
NZ 68	Nugget Point to Raratoka Island (Centre Island)	200,000	Dec. 1987	Aug. 2009
NZ 71	Greymouth to Kahurangi Point	200,000	Oct. 1985	Mar. 2002
NZ 72	Cape Foulwind to Heretaniwha Point	300,000	July 1984	Mar. 2002
NZ 73	Abut Head to Milford Sound	300,000	Oct. 1984	Mar. 2002
	Jackson Bay	50,000		
NZ 76	Western Approaches to Foveaux Strait	300,000	Oct. 1982	Aug. 2009
NZ 463	Approaches to Wellington	100,000	July 1986	June 2011
NZ 521	Cape Brett to Bream Tail	100,000	July 1973	Oct. 2010
NZ 522	Bream Tail to Kawau Island including Great Barrier Island (Aotea Island)	100,000	July 1974	June 2011
NZ 531	Great Barrier Island (Aotea Island) to Mercury Bay	100,000	Oct. 1975	June 2011
NZ 532	Approaches to Auckland	100,000	Oct. 1975	Apr. 2008
NZ 541	Mayor Island to Okurei Point	100,000	Mar. 1976	Jan. 1998
NZ 661	Approaches to Otago Harbour	100,000	Oct. 1989	June 2000
NZ 681	Approaches to Bluff and Riverton / Aparima	100,000	Oct. 1987	Aug. 2009
	Riverton / Aparima	40,000		
NZ 4314	Manukau Harbour	48,000	Oct. 1982	June 2004
	LPG Terminal	3,000		
NZ 4432	Taranaki Roads	25,000	Jan. 1994	July 2008
	Port Taranaki	8,000		
NZ 4633	Wellington Harbour	25,000	Jan. 1987	July 2000

Chart No.	Title of Chart or Plan	Natural Scale 1:	Date of Publication	New Edition
NZ 4634	Wellington Harbour Entrance and Plans of Wharves	-	Jan. 1987	July 2000
	Evans Bay	7,000		
	Lambton Harbour	7,000		
	Point Howard and Seaview Wharves	7,000		
	Entrance to Wellington Harbour	12,500		
4639	Kermadec Islands to East Cape	1,500,000	Apr. 1998	Feb. 2011
4640	New Zealand – North Island	1,500,000	Apr. 1998	Nov. 2003
4641	Norfolk Island to Cape Egmont	1,500,000	Apr. 1998	Feb. 2011
4648	New Zealand – South Island	1,500,000	Apr. 1998	Nov. 2003
NZ 5125	Bay of Islands	25,000	July 1994	-
NZ 5214	Marsden Point	18,000	July 2004	Mar. 2011
NZ 5215	Whangarei Harbour	18,000	July 2004	Mar. 2011
	Continuation to Town Basin	18,000		
NZ 5321	Mahurangi Harbour to Rangitoto Island	40,000	Apr. 2008	-
NZ 5322	Auckland Harbour East	18,000	Apr. 2008	-
	Calliope Wharves	5,000		
	Commercial Harbour	7,500		
NZ 5323	Auckland Harbour West	18,000	Apr. 2008	-
	Kauri Point Wharf	7,500		
	Chelsea Wharf	7,500		
NZ 5324	Tamaki Strait and Approaches including Waiheke Island	40,000	July 1977	Apr. 2008
NZ 5412	Port of Tauranga	10,000	Jan. 1992	Oct. 2004
	Western Channel	10,000		
NZ 5571	Poverty Bay and Approaches to Gisborne	24,000	June 2008	-
	Gisborne Harbour and Entrance	7,000		
NZ 5612	Napier Roads	25,000	Oct. 2006	June 2011
	Napier Harbour	7,500		
NZ 6142	Nelson Harbour and Entrance	36,000	Jan. 1988	June 2008
	Port Nelson	6,000		
NZ 6153	Queen Charlotte Sound	36,000	Jan. 1987	June 2011
NZ 6321	Lyttelton Harbour / Whakaraupo	25,000	Oct. 1976	June 2000
	Port of Lyttelton	7,500		
NZ 6422	Approaches to Timaru	35,000	July 1990	Apr. 2009
	Timaru Harbour	7,000		
NZ 6612	Otago Harbour	16,000	Jan. 1985	July 2004
	Port Chalmers	5,500		
	Dunedin Wharves	8,000		
NZ 6821	Bluff Harbour and Entrance	12,000	Oct. 1985	Aug. 2009
	Port of Bluff	7,000		

Key to symbols

○ ARCS version. See page 14.

■ International Chart. See pages 176-177.



New Zealand

Notes

*1234 indicates that a plan is shown on chart 1234.
 A number against a place name shows that a separate plan is published bearing that number.
 See indexes A and A1 for smaller scale charts.
 The New Zealand charts shown in this index are reprinted by the UKHO. Details about other charts covering New Zealand waters can be found in the New Zealand chart catalogue (NZ202) at www.lin.govt.nz. These charts are obtainable through Admiralty Chart Agents/Distributors listed on pages 6 to 8.