

# North West Australia Torres Strait Sydney Bass Strait and Tasmania Adelaide Fremantle

Chart No.	Title of Chart or Plan	Natural Scale 1:	Date of Publication	New Edition
Aus 52	Entrance Channel to Port Hedland	25,000	Jan. 1988	June 2010
Aus 53	Approaches to Port Hedland	50,000	Feb. 1970	June 2010
Aus 54	Port Hedland	7,500	Nov. 2008	-
Aus 55	Approaches to Port Walcott	50,000	July 1972	May 2002
Aus 56	Port Walcott	12,500	Apr. 1974	July 2009
Aus 57	Dampier Archipelago	75,000	Aug. 1988	Jan. 2011
Aus 58	Port of Dampier	37,500	Jan. 1988	Jan. 2011
Aus 59	Plans in Port Dampier	-	Nov. 1987	-
	Dampier Wharves	15,000		
	Withnell Bay to King Bay	15,000		
Aus 62	Approaches to Varanus Island	50,000	Aug. 2004	-
Aus 64	Approaches to Onslow	75,000	Feb. 2002	-
	Onslow	12,500		
Aus 112	Approaches to Fremantle	37,500	Jan. 1992	July 2002
Aus 113	Port of Fremantle	7,500	Aug. 1972	Jan. 2009
Aus 114	Kwinana	12,500	Aug. 1997	Nov. 2003
	Kwinana Grain Jetty	12,500		
Aus 115	Approaches to Bunbury	50,000	Nov. 1978	Jan. 1998
	Port of Bunbury	10,000		
Aus 117	Gage Roads and Cockburn Sound	25,000	Aug. 1972	Sept. 2004
Aus 125	Plans in South Australia – Gulf of St. Vincent	-	Nov. 1972	Feb. 1994
	Cape Jervis	5,000		
	Wirrina Cove	10,000		
	Glenelg	12,500		
	Kingscote Harbour	25,000		
	Port Stanvac	25,000		
	Eastern Cove and American River	37,500		
Aus 130	Approaches to Port Adelaide	37,500	June 2008	-
Aus 134	Port Lincoln and Approaches	50,000	Mar. 1977	Feb. 2011
	Port Lincoln Wharves	7,500		
	Proper Bay	10,000		
Aus 136	Approaches to Whyalla and Port Pirie	75,000	Mar. 1976	Apr. 2000
	Port Pirie Wharves	7,500		
	Whyalla	18,750		
	Port Bonython	25,000		
	Port Pirie	25,000		
Aus 137	Port Adelaide	12,500	Oct. 1973	May 2008
Aus 138	Port Adelaide Entrance Channel	12,500	Nov. 2007	-
Aus 139	Plans in South Australia (Sheet 2)	-	Oct. 2003	-
	Klein Point	5,000		
	Port Giles	7,500		
	Ardrossan Harbor	12,500		
	Ardrossan Harbor and Approaches	50,000		
	Macdonnell Sound	50,000		
Aus 143	Port Phillip	100,000	May 1973	Apr. 2007
	Blairgowrie	7,500		
	Mornington	7,500		
	Queenscliff	5,000		
	Sorrento	10,000		
	Patterson River	10,000		
Aus 144	The Rip	12,500	Nov. 2009	-
Aus 151	Western Port (Entrance and North Arm)	37,500	Feb. 1994	June 2010
Aus 152	Plans in Western Port	-	June 1992	June 2010
	Hanns Inlet	7,500		
	Hastings Bight	10,000		
	Crib Point Oil Terminal Jetty	12,000		
	Rutherford Inlet	15,000		
Aus 153	Port of Geelong	7,500	Aug. 2008	-
Aus 154	Port Melbourne – Williamstown and River Yarra	7,500	Mar. 1972	May 2010
Aus 155	Approaches to Port of Melbourne	37,500	Jan. 2010	-
	Sandringham	10,000		
	St. Kilda	10,000		
	Altona	7,500		
	Brighton	10,000		
Aus 157	Port of Geelong and Approaches	37,500	Mar. 2009	-
	Point Henry Pier	10,000		
	Point Wilson Pier	10,000		
	Clifton Springs	5,000		
Aus 158	Port Phillip – South and West Channels	37,500	Aug. 1972	Apr. 2007

## Key to symbols

○ ARCS version. See page 14.

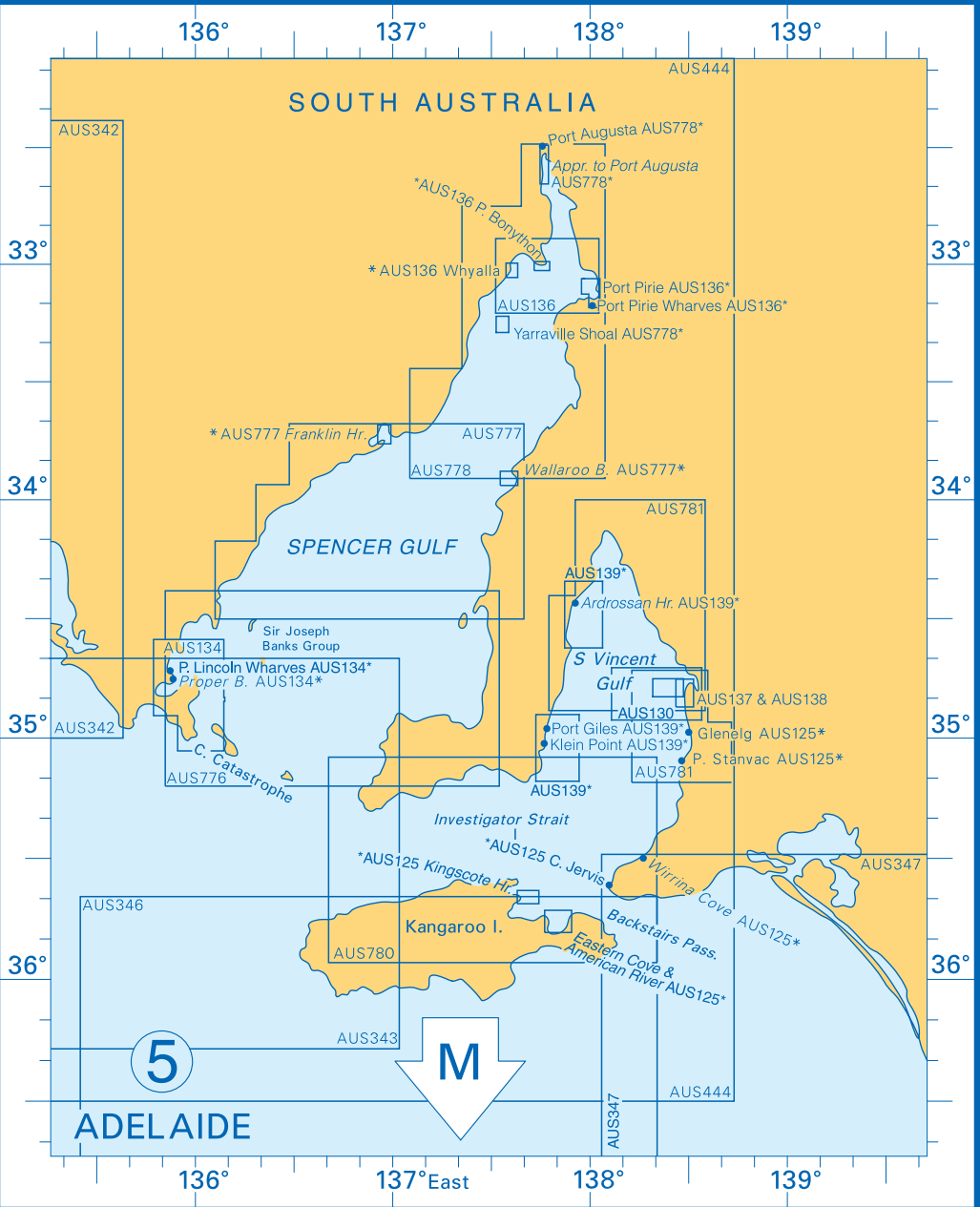
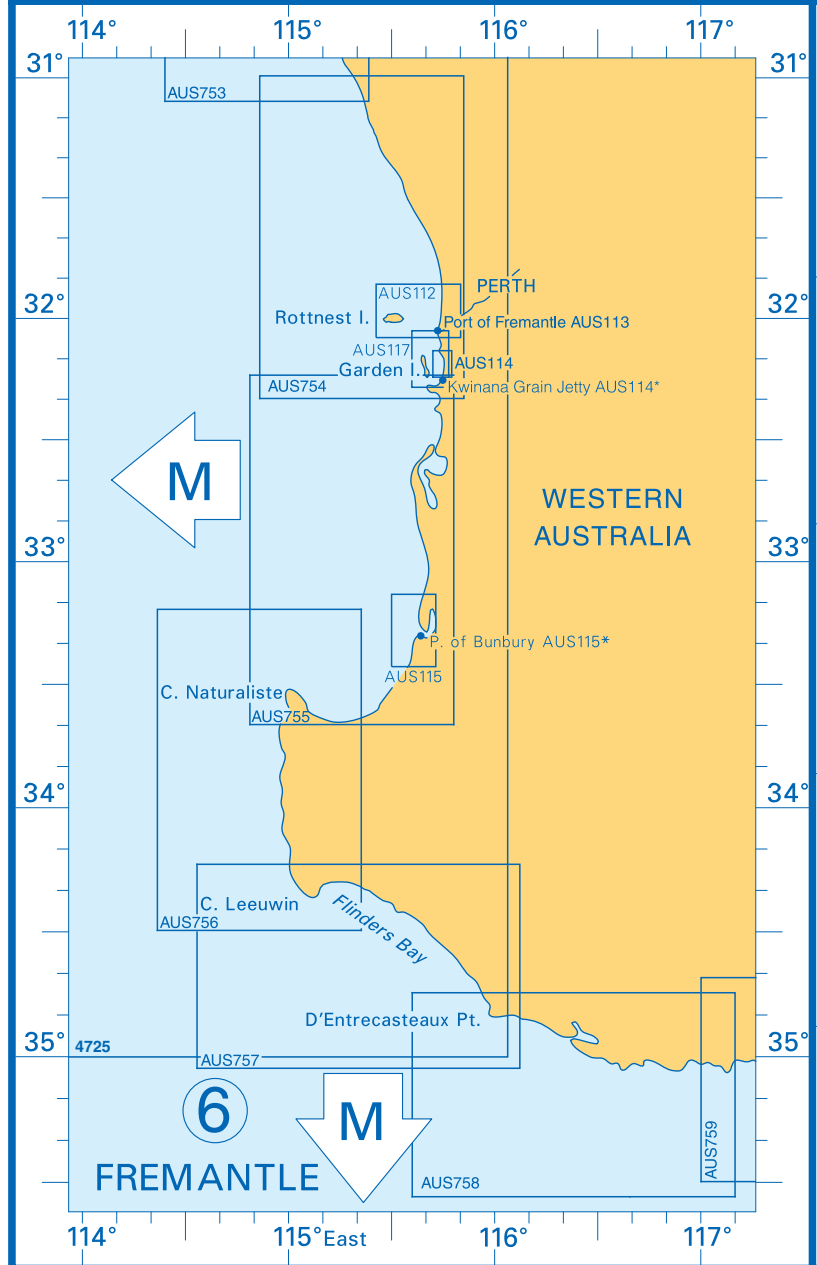
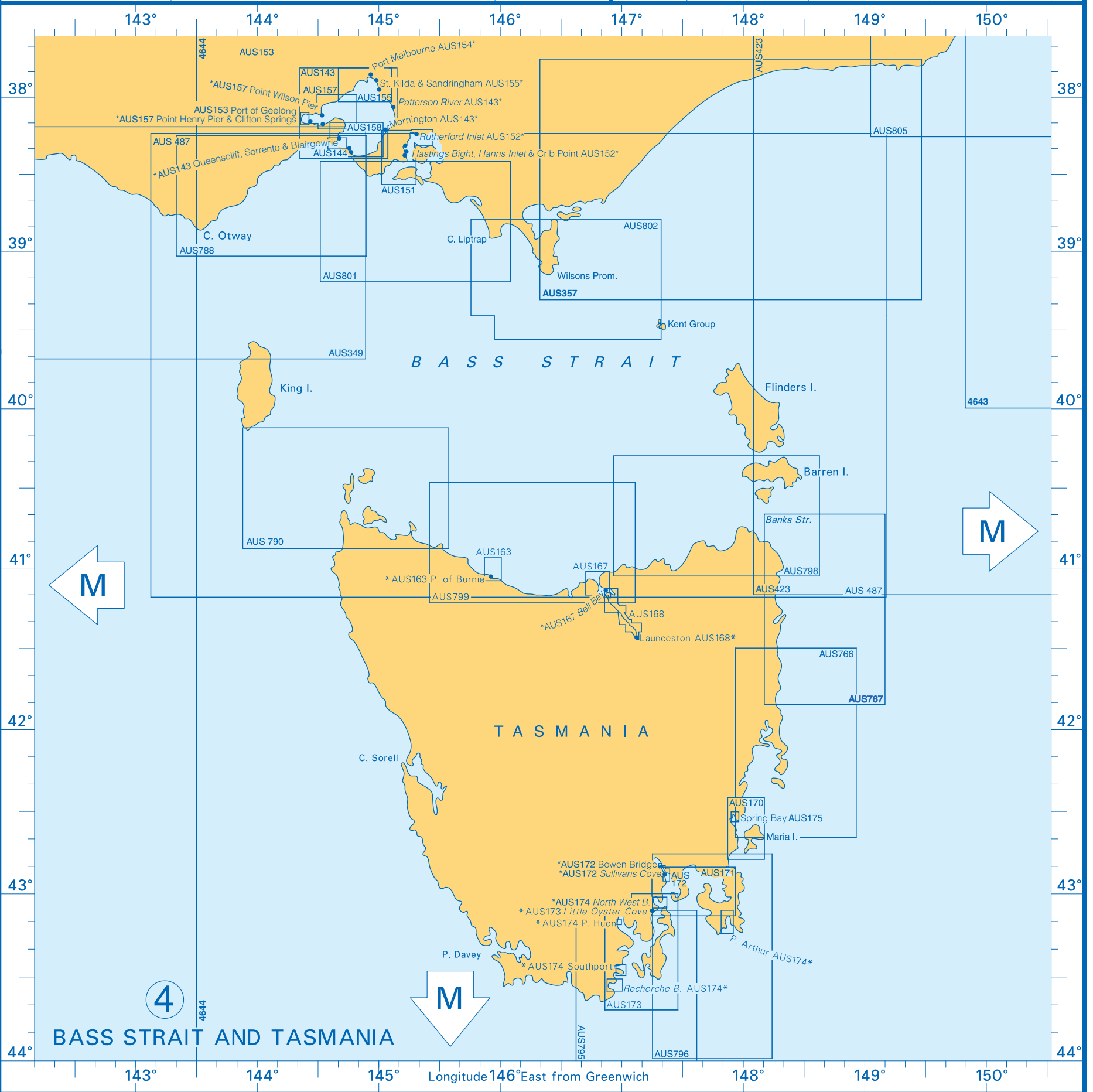
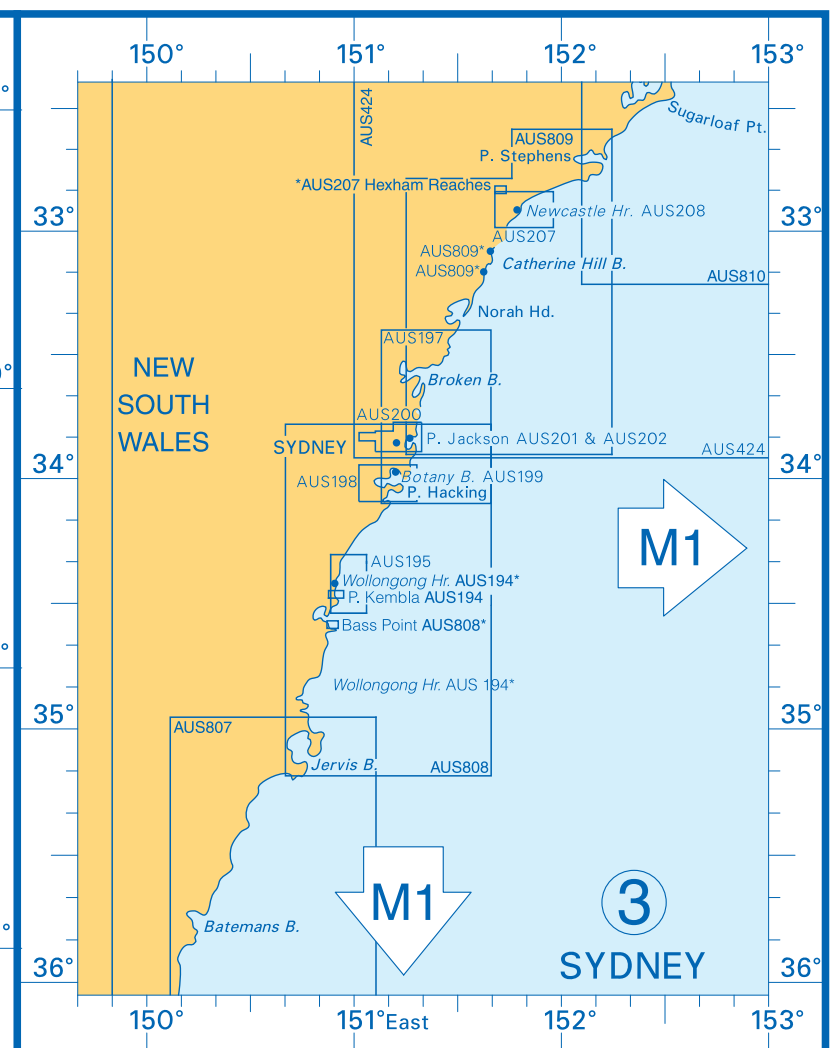
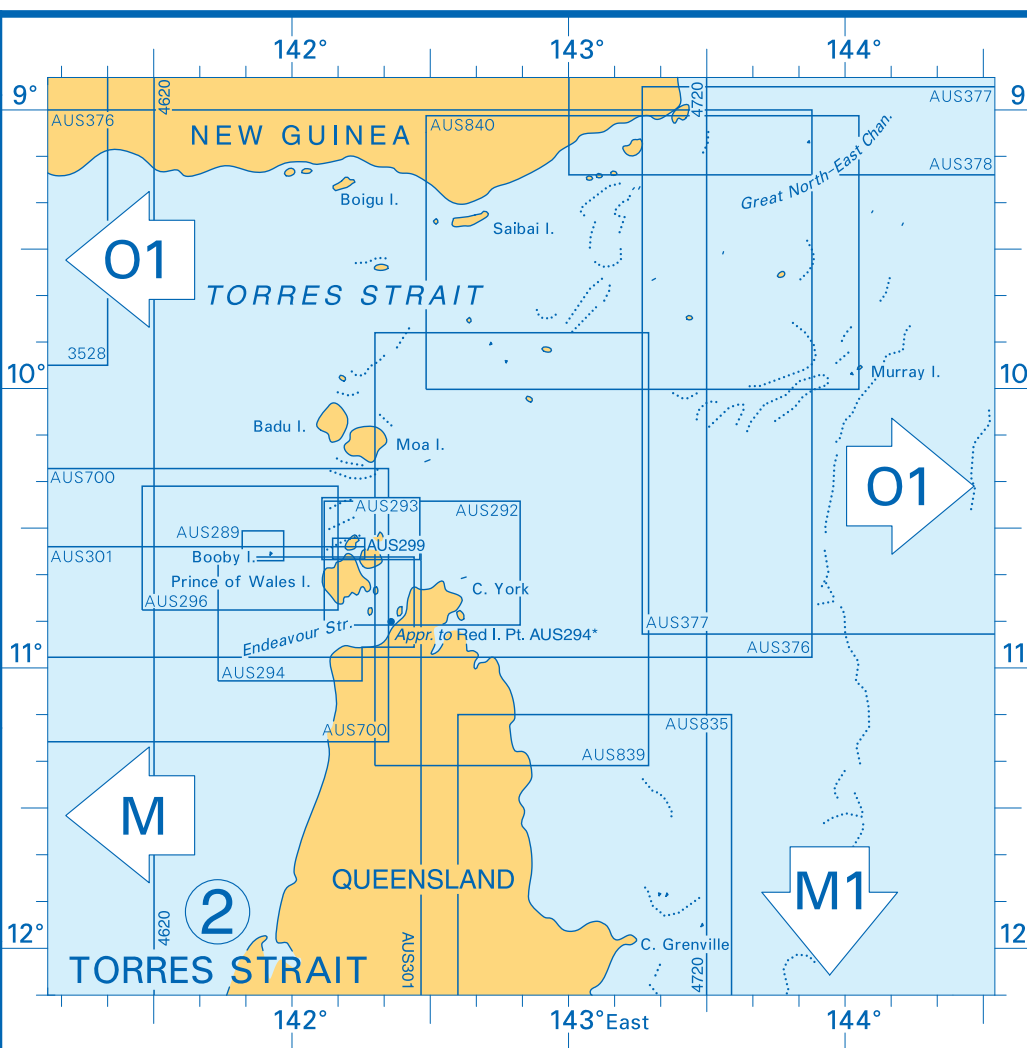
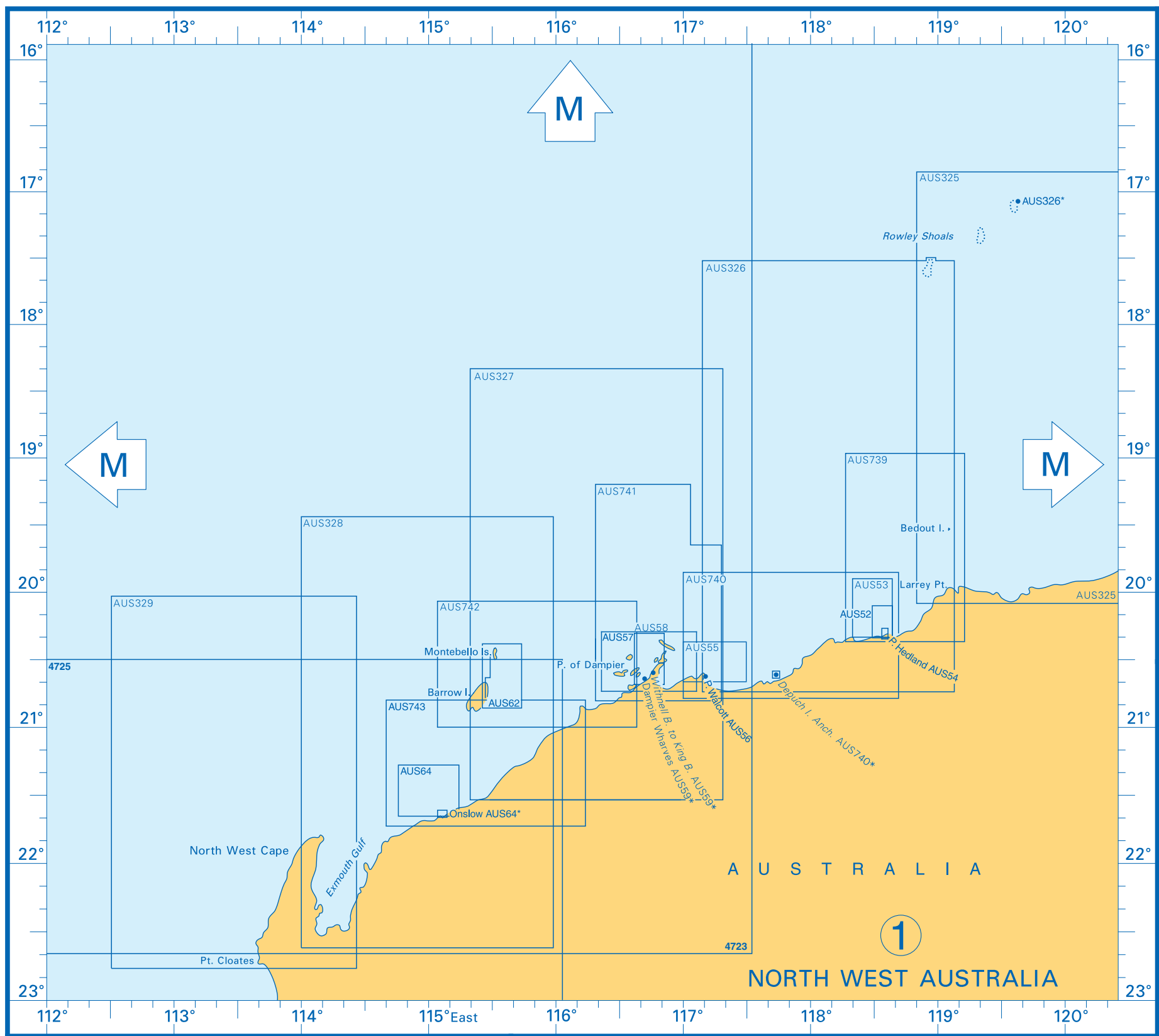
■ International Chart. See pages 176-177.

Chart No.	Title of Chart or Plan	Natural Scale 1:	Date of Publication	New Edition
Aus 163	Approaches to Burnie	25,000	Apr. 1973	Sept. 1993
	Port of Burnie	5,000		
Aus 167	Port Dalrymple	25,000	Mar. 1997	-
	Bell Bay	10,000		
	Long Reach	25,000		
Aus 168	River Tamar – Long Reach to Launceston	25,000	Oct. 2002	-
	Tamar River to Launceston	25,000		
	Launceston Wharves	7,500		
Aus 170	Mercury Passage	37,500	Oct. 2006	-
Aus 171	Hobart to Norfolk Bay	50,000	Feb. 1972	Jan. 2006
Aus 172	Port of Hobart	10,000	Nov. 1971	Sept. 2005
	Bowen Bridge	10,000		
	Sullivans Cove	5,000		
Aus 173	D'Entrecasteaux Channel	75,000	Aug. 2008	-
	Little Oyster Cove	10,000		
Aus 174	Plans in Tasmania	-	June 2008	-
	North West Bay	25,000		
	Port Arthur	25,000		
	Recherche Bay	25,000		
	Southport	25,000		
	Port Huon	12,500		
Aus 175	Sping Bay including Triabunna	10,000	Mar. 2008	-
Aus 194	Port Kembla including Wollongong Harbour	6,000	Sept. 2007	-
	Wollongong Harbour	7,500		
Aus 195	Approaches to Port Kembla	25,000	Feb. 2008	Nov. 2008
Aus 197	Approaches to Port Jackson – Port Hacking to The Skillion	75,000	Jan. 1974	Aug. 2001
Aus 198	Botany Bay and Port Hacking	25,000	Sept. 1973	June 2005
Aus 199	Botany Bay	12,000	May 1973	Aug. 1996
Aus 200	Port Jackson	20,000	Aug. 1972	Sept. 2010
	Parramatta River	20,000		
Aus 201	Port Jackson – Eastern Sheet	7,500	Aug. 2000	July 2001
Aus 202	Port Jackson – Central Sheet – Sydney Harbour	7,500	Aug. 2000	July 2001
Aus 207	Approaches to Newcastle	25,000	Apr. 1993	July 2000
	Hexham Reach	25,000		
Aus 208	Newcastle Harbour	7,500	May 1972	Mar. 2010
	Hunter River (South Arm)	10,000		
Aus 289	Gannet and Varzin Passages	25,000	Sept. 1988	Mar. 2003
Aus 292	Adolphus Channel to Prince of Wales Channel	75,000	Sept. 1988	June 2005
Aus 293	Prince of Wales Channel	37,500	June 1988	-
Aus 294	Endeavour Strait	75,000	Nov. 1988	-
	Approaches to Red Island Point	20,000		
Aus 296	Goods Island to Proudfoot Shoal	75,000	June 1973	Nov. 1988
Aus 299	Approaches to Thursday Island	12,500	Feb. 1988	June 2011
Aus 301	Booby Island to Archer River	300,000	Apr. 1990	Feb. 2010
Aus 325	Rowley Shoals to Bedout Islet	300,000	Aug. 2010	-
Aus 326	Bedout Islet to Port Walcott	300,000	Mar. 1980	Jan. 2010
	Mermaid Reef	12,500		
Aus 327	Port Walcott to Montebello Islands	300,000	Dec. 2010	-
Aus 328	Montebello Islands to North West Cape	300,000	Dec. 1985	-
Aus 329	North West Cape to Point Cloates	300,000	July 2010	-
Aus 342	Streaky Bay to Whidbey Isles	300,000	Jan. 1979	Mar. 1997
Aus 343	Whidbey Isles to Cape du Couedic	300,000	June 1990	-
Aus 346	Kangaroo Island (South Coast)	300,000	Apr. 1992	-
Aus 347	Backstairs Passage to Cape Martin	300,000	Aug. 2001	-
Aus 349	Cape Nelson to Port Phillip	300,000	July 2010	-
Aus 357	South East Point to Point Hicks	300,000	Jan. 2011	-
Aus 376	Torres Strait	300,000	Jan. 1984	Mar. 2006
Aus 377	Bligh Entrance to Eastern Fields	300,000	Oct. 1985	June 2006
Aus 378	Daru Roads to Kerema Bay	300,000	Mar. 2008	-
Aus 444	St. Vincent and Spencer Gulfs	500,000	May 1992	-
Aus 487	Bass Strait	500,000	Jan. 2005	-
Aus 700	Western Approaches to Torres Strait	150,000	July 1979	July 1994
Aus 739	Bedout Islet to Port Hedland	150,000	Jan. 2010	-
Aus 740	Port Hedland to Port Walcott	150,000	Jan. 2010	-
	Depuch Island Anchorage	20,000		
Aus 741	Approaches to Dampier Archipelago	150,000	Jan. 2010	-
Aus 742	Rosemary Island to Barrow Island	150,000	Aug. 1994	Apr. 2005
Aus 743	Barrow Island to Onslow	150,000	Oct. 1993	-
Aus 753	Beagle Islands to Lancelin	150,000	May 1986	Aug. 2009

Chart No.	Title of Chart or Plan	Natural Scale 1:	Date of Publication	New Edition
Aus 754	Lancelin to Cape Peron	150,000	June 1986	July 2002
Aus 755	Cape Peron to Cape Naturaliste	150,000	May 1985	Jan. 2009
Aus 756	Cape Naturaliste to Cape Leeuwin	150,000	Feb. 1982	Jan. 2009
Aus 757	Cape Leeuwin to Point D'Entrecasteaux	150,000	Feb. 1981	Jan. 2009
Aus 758	Point D'Entrecasteaux to Point Hillier	150,000	Mar. 1980	Jan. 2009
Aus 759	Point Hillier to Bald Island	150,000	Mar. 1984	Jan. 2009
Aus 766	Mistaken Cape to Wardlaws Point	150,000	Apr. 2007	-
Aus 767	Wardlaws Point to Eddystone Point	150,000	Jan. 2007	-
Aus 776	Williams Island to Winceby Island	150,000	Mar. 1977	Nov. 2002
Aus 777	Winceby Island to Point Riley	150,000	Nov. 1977	Feb. 2007
	Wallaroo Bay	35,000		
	Franklin Harbor	50,000		
Aus 778	Point Riley to Port Augusta	150,000	Feb. 1978	Feb. 2007
	Approaches to Port Augusta	25,000		
	Port Augusta	7,500		
	Yarraville Shoal	50,000		
Aus 780	Althorpe Islands to Backstairs Passage	150,000	Oct. 2010	-
Aus 781	Gulf of St. Vincent	150,000	Oct. 2010	-
Aus 788	Cape Otway to Cape Schanck	150,000	June 1996	-
Aus 790	Stokes Point to Rocky Cape	150,000	Oct. 1971	Nov. 2004
Aus 795	South Cape to Storm Bay	150,000	Aug. 2008	-
Aus 796	Tasman Head to Cape Frederick Hendrick	150,000	Aug. 2008	-
Aus 798	Eddystone Point to Stony Head	150,000	Oct. 1996	Feb. 2003
Aus 799	Stony Head to Rocky Cape	150,000	June 1996	-
Aus 801	Cape Schanck to Cape Liptrap	150,000	May 1996	-
Aus 802	Cape Liptrap to Clifly Island	150,000	Dec. 1975	-
Aus 805	Point Hicks to Cape Howe	150,000	June 2005	-
Aus 807	Montague Island to Jervis Bay	150,000	Nov. 2008	-
Aus 808	Jervis Bay to Port Jackson	150,000	Jan. 2001	-
	Bass Point	25,000		
Aus 809	Port Jackson to Port Stephens	150,000	Apr. 1994	Nov. 2000
	Lake Macquarie Entrance	25,000		
	Catherine Hill Bay	7,500		
Aus 810	Port Stephens to Crowdy Head	150,000	Sep. 2001	Mar. 2006
Aus 835	Cape Weymouth to Cairncross Islets	150,000	Nov. 1974	Mar. 2006
Aus 839	Cairncross Islets to Arden Islet	150,000	Feb. 1978	Mar. 2006
Aus 840	Arden Islet to Bramble Cay	150,000	Oct. 1974	Nov. 2003
3528	Selat Muli to Unji Point	300,000	Jan. 1985	-
	Pelabuhan Merauke	75,000		
4620	Percy Isles to Booby Island including Gulf of Papua	1,500,000	June 2006	Aug. 2011
4643	Cape Howe to Cape Moreton	1,500,000	Dec. 2010	-
4644	Cape Otway to Cape Howe including Tasmania	1,500,000	Dec. 2010	-
4720	Booby Island to Cape Wessel including Gulf of Carpentaria	1,500,000	Sept. 2004	June 2007
4723	Jawa to North West Cape	1,500,000	Nov. 2010	-
4725	North West Cape to Cape Leeuwin	1,500,000	Nov. 2010	-

# PART 3

# M2



**North West  
Australia**

**Torres Strait**

**Sydney**

**Bass Strait and  
Tasmania**

**Adelaide**

**Fremantle**

**Notes**

\*1234 indicates that a plan is shown on chart 1234.

A number against a place name shows that a separate plan is published bearing that number.

See indexes A, A1 and A2 for smaller scale charts.

The Australian charts shown in this index are reprinted by the UKHO. Details about other charts covering Australian waters can be found on the Australian index charts Aus5000 and Aus5001 and through the Australian chart index at [www.hydro.gov.au](http://www.hydro.gov.au). These charts are obtainable through Admiralty Chart Agents/Distributors listed on pages 6 to 8.