

Baltic Sea Gulf of Finland Gulf of Bothnia

Key to symbols

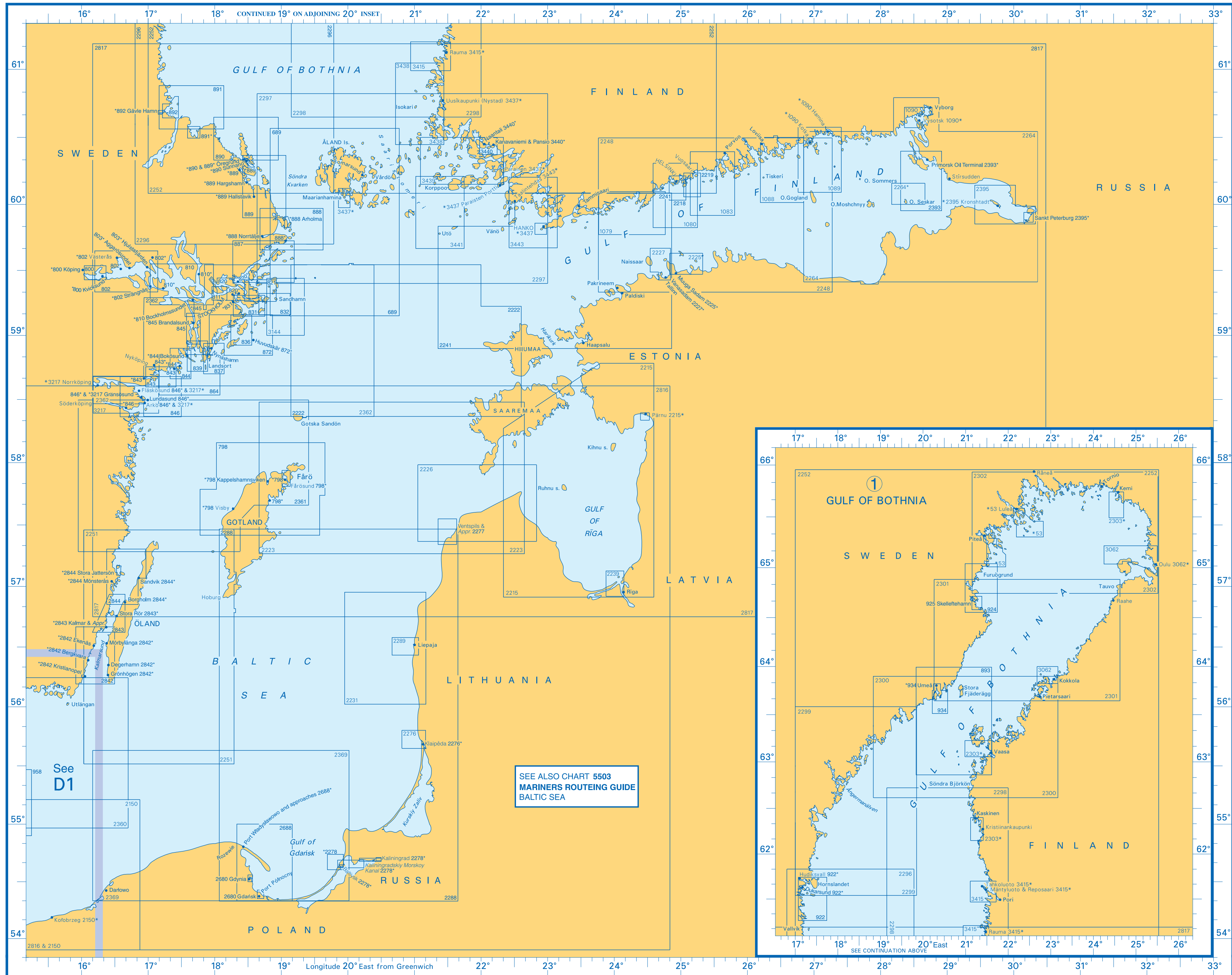
○ ARCS version. See page 14.

■ International Chart. See pages 176-177.

Chart No.	Title of Chart or Plan	Natural Scale 1:	Date of Publication	New Edition
53 ○	Piteå and Luleå A Piteå and Approaches B Continuation to Piteå C Approaches to Luleå D Luleå	- 50,000 50,000 50,000 20,000	Jan. 1987	Oct. 2009
689 ○I	Entrance to the Gulf of Bothnia	150,000	Dec. 2010	-
798 ○	Gotland Northern Part A Visby B Kappelshamnsviken C Fårösund D Slite Approaches E Slite F Ports of Fårösund	120,000 10,000 25,000 50,000 50,000 10,000 12,500	Mar. 2011	-
800 ○	Köping and Approaches A Köping B Kviksund	25,000 25,000 12,500	Sept. 2010	-
802 ○I	Mälaren Western Part A Västerås B Flaten C Enköpingsån Entrance D Strängnäs	50,000 12,500 12,500 25,000 12,500	Sept. 2010	-
803 ○	Hjulstafjärden and Aggarösundet A Hjulstafjärden B Aggarösundet	- 12,500 12,500	Sept. 2010	-
810 ○	Mälaren Eastern Part A Stallarholmen-Kolsundet B Stäket C Bockholmssundet D Continuation at same scale	50,000 25,000 10,000 25,000 50,000	Sept. 2010	-
811 ○I	Port of Stockholm	12,500	Aug. 2011	-
820 ○I	Västra Saxarfjärden to Stockholm A Edsviken B Baggens-Stäket C Farsta-Sundet D Gustavsberg E Stegesundet	25,000 50,000 10,000 10,000 10,000 10,000	Aug. 2011	-
821 ○I	Sandhamn to Östra Saxarfjärden	25,000	Aug. 2011	-
831 ○I	Nämdöfjärden Inre Erstaviken	25,000 25,000	June 2011	-
832 ○I	Approaches to Sandhamn	25,000	Aug. 2011	-
836 ○I	Mysingen to Jungfrufjärden	25,000	June 2011	-
837 ○I	Landsort to Nynashamn	25,000	Dec. 2010	-
839 ○I	Southern Approaches to Södertälje from Landsort to Björnö	25,000	Dec. 2010	-
843 ○I	Oxelösund and Nyköping with Approaches A Continuation B Continuation C V Stendörren	25,000 25,000 10,000	Aug. 2011	-
844 ○I	Lillhammarsgrund to Bokösund A Bokösund B Sävsundet C V Stendörren	25,000 12,500 10,000 10,000	Aug. 2011	-
845 ○I	Södertälje and Approaches A Södertälje B Brandalsund	25,000 12,500 12,500	Dec. 2010	-
846 ○I	Outer Approaches to Oxelösund and Norrköping A Arkö B Lundasund C Gränsösund D Fläskösund E Ettersundet	50,000 25,000 25,000 25,000 25,000	Aug. 2011	-
864 ○I	Havringe to Landsort	50,000	Aug. 2011	-
872 ○I	Nynashamn to Dalarö A Huvudskär	50,000 12,500	June 2011	-
887 ○I	Furusund to Österskär	50,000	July 2011	-
888 ○I	Ålands Hav to Furusund A Arholma B Kapellskär C Norrtälje	50,000 25,000 15,000 15,000	Dec. 2010	-
889 ○I	Vaddö to Öregrund A Öregrund B Öregrundsleden C Continuation D Östhammar E Hargshamn F Hallstavik	50,000 12,500 25,000 50,000 12,500 12,500 12,500	Apr. 2011	-

Chart No.	Title of Chart or Plan	Natural Scale 1:	Date of Publication	New Edition
890 ○I	Grundkallen to Björn with Northern Approaches to Öregrund A Öregrund B Sunnano	50,000 12,500 25,000	Apr. 2011	-
891 ○I	Björn to Iggön A Continuation	50,000 50,000	Apr. 2011	-
892 ○I	Gävle and Approaches A Gävle Hamn	25,000 12,500	Apr. 2011	-
893 ○I	Norra Kvarken	125,000	Apr. 2011	-
922 ○I	Hällgrund to Hornslandet A Hudiksvall B Dukarsund	50,000 25,000 25,000	June 2011	-
924 ○I	Approaches to Skelleftehamn	50,000	Nov. 2010	-
925 ○I	Skelleftehamn	20,000	Nov. 2010	-
934 ○I	Umeå and Approaches	25,000	Nov. 2010	-
1079 ○	Approaches to Inkoo and Kantvik	55,000	Mar. 1996	Oct. 2010
1080 ○	Approaches to Helsinki	55,000	July 1996	Oct. 2010
1083 ○	Approaches to Vuosaari and Porvoo	55,000	Sept. 1995	Mar. 2009
1088 ○	Approaches to Loviisa and Valkom	55,000	Feb. 1991	Feb. 2009
1089 ○	Approaches to Kotka and Hamina A Kotka B Hamina (Fredrikshamn) C Vyborg and Approaches D Vysotsk	55,000 20,000 20,000 35,000 20,000	Nov. 1990	Apr. 2009
1090 ○	Ports in the Gulf of Finland A Kotka B Hamina (Fredrikshamn) C Vyborg and Approaches D Vysotsk	- 20,000 20,000 35,000 20,000	Feb. 1990	June 2011
2150 ○	Arkona to Ustka Kolobrzeg	200,000 10,000	Mar. 1974	Oct. 2010
2215 ○	Gulf of Rīga A Pärnu	200,000 25,000	June 1972	July 2004
2218 ○I	Helsinki	20,000	May 2011	-
2219 ○I	Vuosaari	20,000	May 2011	-
2222 ○	Gotska Sandön to Hiiumaa	200,000	Feb. 1971	May 2006
2223 ○	Gotland to Saaremaa	200,000	Dec. 1970	Nov. 2010
2225 ○	Muuga Sadam and Approaches Muuga Sadam	27,500 12,500	Nov. 1990	Aug. 2004
2226 ○	Entrance to the Gulf of Rīga	100,000	Apr. 1994	Mar. 2009
2227 ○	Tallinn and Approaches Vanasadam	27,500 7,500	July 1971	July 2005
2231 ○I	Šventoji to Pärnu	100,000	Jan. 2001	-
2239 ○I	Rīga and Approaches	25,000	June 2000	Feb. 2009
2241 ○	Entrance to the Gulf of Finland	200,000	Feb. 1972	Oct. 2010
2248 ○	Gulf of Finland – Western Part	200,000	Aug. 1973	Oct. 2010
2251 ○	Öland to Gotland with Kalmarsund	200,000	Jan. 1973	Nov. 2010
2252 ○	Gulf of Bothnia	750,000	Oct. 1971	Feb. 1997
2264 ○	Gulf of Finland – Eastern Part A Continuation to Vyborg B Traffic Lanes North of Ostrov Seskar	200,000 200,000 100,000	Jan. 1975	Feb. 2010
2276 ○	Klaipėda and Approaches A Klaipėda B Continuation of Klaipėda	35,000 12,500 12,500	May 1991	Aug. 2006
2277 ○	Ventspils and Approaches	25,000	Sept. 1985	June 2006
2278 ○	Baltiysk and Kaliningrad A Approaches to Baltiysk B Kaliningradskiy Morskoy Kanal C Continuation of Kaliningradskiy Morskoy Kanal D Baltiysk E Kaliningrad	- 75,000 25,000 25,000 12,500 12,500	Mar. 1999	Apr. 2011
2288 ○	Rozewie to Ventspils	350,000	Feb. 1974	Nov. 2010
2289 ○	Liepāja and Approaches	25,000	Jan. 2001	Apr. 2003
2296 ○	Norrtälje to Hudiksvall	225,000	Oct. 1994	Nov. 2009
2297 ○	Saaristomeri and Ålands Hav	225,000	Nov. 1984	Nov. 2009
2298 ○	Isokari to Gåshällan	225,000	June 1983	-
2299 ○	Hudiksvall to Husum	225,000	Mar. 1991	-
2300 ○	Skagsudde to Stora Fjäderägg and Södra Björkö to Pietarsaari	225,000	Sept. 1995	-
2301 ○	Holmsund to Skellefteå and Pietarsaari to Tauvo	225,000	Aug. 1984	-
2302 ○	Furuögrund and Tauvo to Tornio	225,000	Nov. 1985	Nov. 2003
2303 ○	Ports on the West Coast of Finland Kemi and Approaches Kristinankaupunki and Kaskinen Vaasa and Approaches	- 50,000 50,000 50,000	July 1985	Apr. 2009
2360 ○	Falsterbo to Öland	200,000	July 1974	May 2006
2361 ○	Öland to Gotska Sandön	200,000	Mar. 1972	Nov. 2010
2362 ○	Approaches to Stockholm A Continuation to Norrköping	200,000 200,000	Jan. 1972	July 1997
2369 ○	Darłowo to Mys Taran including Gulf of Gdańsk	200,000	Apr. 1974	Oct. 2010

Chart No.	Title of Chart or Plan	Natural Scale 1:	Date of Publication	New Edition
2393 ○	Primorsk Oil Terminal and Approaches Primorsk Oil Terminal	50,000 12,500	July 2010	-
2395 ○	Sankt Peterburg and Approaches A Sankt Peterburg B Kronshadt	50,000 25,000 25,000	Nov. 1979	Oct. 2011
2680 ○I	Gdynia and Gdańsk A Gdynia B Gdańsk	- 10,000 12,500	Oct. 2001	Dec. 2010
2688 ○I	Approaches to Gdynia and Gdańsk A Approaches to Władysławowo B Port Władysławowo	75,000 15,000 6,000	Oct. 2001	Dec. 2010
2816 ○	Baltic Sea – Southern Sheet	750,000	Jan. 1980	Oct. 2010
2817 ○	Baltic Sea – Northern Sheet and Gulf of Finland	750,000	Mar. 1995	Oct. 2010
2842 ○	Kalmarsund – Southern Part A Ekenäs B Bergkvara C Kristianopel D Mörbylånga E Degerhamn F Grönhögen	50,000 10,000 25,000 10,000 10,000 10,000 10,000	July 2003	Mar. 2005
2843 ○I	Kalmarsund – Middle Part A Kalmar and Approaches B Stora Rör C Borgholm	50,000 12,500 5,000 12,500	July 2003	Mar. 2011
2844 ○	Kalmarsund – Northern Part A Mönsterås B Sandvik C Stora Jattersön D Borgholm	50,000 12,500 12,500 25,000 12,500	July 2003	Dec. 2008
3062 ○	Kokkola and Oulu with Approaches A Kokkola and Approaches B Approaches to Oulu C Oulu	- 75,000 60,000 20,000	June 1985	Apr. 2009
3144 ○	Outer Approaches to Sandhamn	50,000	Aug. 1994	-
3217 ○	Approaches to Söderköping and Norrköping Arkö Fläskösund Gränsösund Norrköping	50,000 25,000 25,000 25,000	May 1995	-
3415 ○	Tahkoluoto, Mäntyluoto and Rauma with Approaches A Approaches to Mäntyluoto and Tahkoluoto B Approaches to Rauma C Tahkoluoto D Mäntyluoto and Reposaari E Rauma	- 50,000 50,000 20,000 20,000 25,000	July 1983	Apr. 2004
3437 ○	Hanko, Maarianhamina, Parainen, Paraisten Portti and Uusikaupunki A Maarianhamina (Mariehamn) B Parainen (Pargas) C Paraisten Portti (Pargas Port) D Uusikaupunki (Nystad) E Hanko (Hangö)	- 25,000 25,000 25,000 25,000 20,000	Sept. 1995	Aug. 2009
3438 ○	Approaches to Uusikaupunki (Nystad)	60,000	Sept. 1996	July 2003
3439 ○	Outer Approaches to Turku	60,000	Dec. 1999	May 2010
3440 ○I	Turku and Approaches A Naantali (Nädendal) B Pansio C Kanavaniemi	20,000 10,000 5,000 10,000	May 2011	-
3441 ○	Saaristomeri – Southern Part – Utö to Korppoo	60,000	Dec. 1999	May 2010
3443 ○	Approaches to Hanko Taalintheadas	60,000 25,000	Sept. 1999	Aug. 2009



**Baltic Sea
Gulf of Finland
Gulf of Bothnia**

Notes

*1234 indicates that a plan is shown on chart 1234.

A number against a place name shows that a separate plan is published bearing that number.

See indexes A, A1 and A2 for smaller scale charts.

Additional paper chart coverage of this area is available from the hydrographic offices of Finland and Sweden whose contact details can be found on page 151.