

The World - Index of Charts at 1:3,500,000 or comparable scale

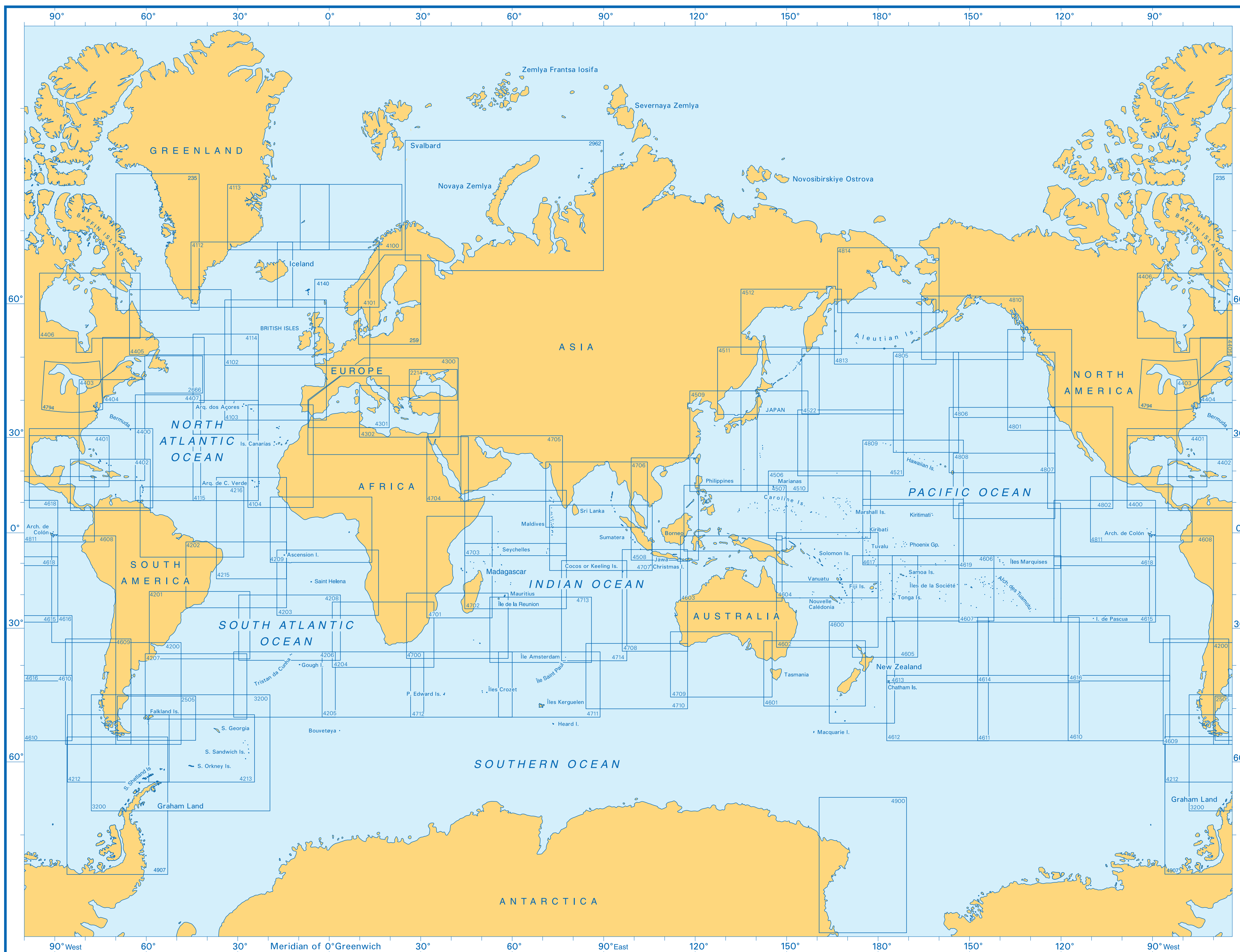
Chart No.	Title of Chart or Plan	Natural Scale 1:	Date of Publication	New Edition
235	Davis Strait and South East Part of Baffin Bay	1,800,000	Apr. 1875	July 2011
259	Baltic Sea	1,500,000	July 1995	Oct. 2010
2214	Black Sea including Marmara Denizi and Sea of Azov	1,200,000	Dec. 1995	-
2505	Approaches to the Falkland Islands	1,500,000	Nov. 1983	Sept. 2010
2666	Grand Banks of Newfoundland	1,500,000	Oct. 1973	Jan. 2003
2962	Nordkapp to Ostrov Uyedineniya including the Barents and Kara Seas	2,400,000	June 1898	May 2007
3200	Falkland Islands to South Sandwich Islands and Graham Land	3,750,000	Dec. 1995	July 2011
4100	Norwegian Sea – Norway to Jan Mayen	3,500,000	Dec. 1979	May 2007
4101	Norwegian Sea – Norway to Iceland	3,500,000	Dec. 1979	May 2011
4102	Western Approaches to the British Isles	3,500,000	Dec. 1972	May 2001
4103	English Channel to the Strait of Gibraltar and the Arquipélago dos Açores	3,500,000	Dec. 1979	Sept. 2003
4104	Lisboa to Freetown	3,500,000	Feb. 1978	Aug. 2003
4112	Iceland to Greenland	3,500,000	Oct. 1976	Oct. 2003
4113	Greenland and Norwegian Seas	3,500,000	Oct. 1976	Oct. 2003
4114	Arquipélago dos Açores to Flemish Cap	3,500,000	Jan. 1977	Sept. 2011
4115	Arquipélago dos Açores to the Arquipélago de Cabo Verde	3,500,000	May 1977	Sept. 2011
4140	North Sea	1,500,000	June 1979	May 2011
4200	Río de la Plata to Cabo de Hornos	3,500,000	June 1980	Nov. 2010
4201	South East Coast of South America	3,500,000	Nov. 1976	Feb. 2011
4202	East Coast of South America	3,500,000	Mar. 1980	Feb. 2011
4203	Ascension Island and Luanda to Walvis Bay	3,500,000	Sept. 1972	June 2011
4204	Walvis Bay to Maputo	3,500,000	Dec. 1975	Aug. 2010
4205	Agulhas Plateau to Discovery Seamounts	3,500,000	Oct. 1979	Mar. 2011
4206	Tristan da Cunha Group to Discovery Seamounts and Islas Orcadas Rise	3,500,000	Feb. 1979	Feb. 2011
4207	Falkland Islands to Cabo Corrientes and Northeast Georgia Rise	3,500,000	Sept. 1980	Apr. 2003
4208	Ilha da Trindade to Tristan da Cunha Group	3,500,000	Oct. 1978	May 2003
4209	Freetown to Luanda	3,500,000	Jan. 1974	Apr. 2011
4212	Drake Passage	3,500,000	Jan. 1985	June 2002
4213	Scotia Sea	3,500,000	Jan. 1985	Mar. 2011
4215	Recife to Dakar	3,500,000	Dec. 1979	June 2011
4216	North East Coast of South America	3,500,000	Dec. 1979	Dec. 2010
4300	Mediterranean and Black Seas	4,200,000	Apr. 1988	Oct. 2003
4301	Mediterranean Sea – Western Part	2,250,000	Sept. 1976	Oct. 2003
4302	Mediterranean Sea – Eastern Part	2,250,000	Jan. 1985	Oct. 2003
4400	The West Indies	4,250,000	Aug. 1985	Dec. 2010
4401	Gulf of Mexico	2,750,000	Oct. 1982	Nov. 2010
4402	Caribbean Sea	2,750,000	Oct. 1982	May 2003
4403	South East Coast of North America including the Bahama Islands and Greater Antilles	3,500,000	Oct. 1975	Mar. 2011
4404	Gulf of Maine to Strait of Belle Isle including Gulf of St. Lawrence	3,500,000	Aug. 1974	Jan. 2003
4405	Labrador Sea – Strait of Belle Isle to Davis Strait	3,500,000	Aug. 1977	Aug. 2003
4406	Hudson Strait and Bay James Bay	3,500,000	Aug. 1977	June 2003
4407	Trinidad to the Mid-Atlantic Ridge	3,500,000	June 1979	Oct. 2003
4506	Mariana Islands to the Gilbert Group	3,500,000	June 1983	June 2003
4507	Philippines to Bismarck Archipelago	3,500,000	June 1988	Jan. 2011
4508	South China Sea	3,500,000	Sept. 1987	May 2003
4509	Western Portion of Japan	3,500,000	Mar. 1980	Jan. 2011
4510	Eastern Portion of Japan	3,500,000	Mar. 1980	Feb. 2011
4511	Northern Portion of Japan	3,500,000	Aug. 1980	Feb. 2002
4512	Sea of Okhotsk	3,500,000	Dec. 1982	Feb. 2002
4521	Hawaiian Islands to Minami – Tori Shima	3,500,000	July 1983	Apr. 2008

Chart No.	Title of Chart or Plan	Natural Scale 1:	Date of Publication	New Edition
4522	Mys Lopatka to the Chinook Trough	3,500,000	Dec. 1982	Nov. 2003
4600	New Zealand including Norfolk Island and Campbell Island	3,500,000	May 1975	Feb. 2011
4601	Tasman Sea	3,500,000	Sept. 1974	Feb. 2011
4602	Tasman and Coral Seas – Australia to Northern New Zealand and Fiji	3,500,000	Sept. 1975	Jan. 2002
4603	Australia – North Coast and Adjacent Waters	3,500,000	July 1977	May 2003
4604	Coral and Solomon Seas and Adjacent Seas	3,500,000	July 1977	Jan. 2003
4605	New Zealand to Fiji and Samoa Islands	3,500,000	June 1980	Feb. 2011
4606	Tonga to Archipel des Tuamotu	3,500,000	June 1980	Feb. 2011
4607	South East Polynesia	3,500,000	Sept. 1976	Feb. 2006
4608	Guayaquil to Valparaíso	3,500,000	Mar. 1981	Nov. 2010
4609	Valparaíso to Islas Diego Ramírez	3,500,000	Mar. 1981	Nov. 2010
4610	Pacific – Antarctic Rise to Southeast Pacific Basin	3,500,000	Sept. 1979	Mar. 2011
4611	Southwest Pacific Basin to Pacific – Antarctic Rise	3,500,000	June 1979	Mar. 2011
4612	Chatham Islands to Pacific – Antarctic Rise	3,500,000	Sept. 1979	Mar. 2011
4613	Chatham Islands to Île Rapa	3,500,000	Sept. 1979	Mar. 2011
4614	Île Rapa to Pacific – Antarctic Rise	3,500,000	Dec. 1978	Mar. 2011
4615	Isla de Pascua and East Pacific Rise	3,500,000	June 1979	July 2011
4616	Isla de Pascua to Chile Rise	3,500,000	Oct. 1979	Mar. 2011
4617	Tuvalu to Palmyra Island	3,500,000	Dec. 1980	July 2003
4618	Île Clipperton to Archipiélago de Colón	3,500,000	Aug. 1984	July 2003
4619	Îles Marquises to Clipperton Fracture Zone	3,500,000	Apr. 1985	Dec. 2003
4700	Port Elizabeth to Mauritius	3,500,000	Dec. 1975	Aug. 2010
4701	Maputo to Mugdisho	3,500,000	Feb. 1972	Aug. 2010
4702	Chagos Archipelago to Madagascar	3,500,000	Feb. 1974	Aug. 2010
4703	Gulf of Aden to the Maldives and the Seychelles Group	3,500,000	Mar. 1975	Feb. 2003
4704	Red Sea	2,250,000	Aug. 1973	Jan. 2004
4705	Arabian Sea	3,500,000	Mar. 1977	July 2011
4706	Bay of Bengal	3,500,000	Mar. 1977	Feb. 2003
4707	Maldives to Sumatera	3,500,000	Jan. 1974	Feb. 2011
4708	Australia – West Coast	3,500,000	Jan. 1977	Apr. 2006
4709	Australia – South Coast	3,500,000	Jan. 1977	Apr. 2006
4710	Cape Leeuwin to Southeast Indian Ridge	3,500,000	Nov. 1978	Jan. 2002
4711	Île Amsterdam to Îles Kerguelen	3,500,000	Nov. 1978	Mar. 2011
4712	Îles Crozet to Prince Edward Islands	3,500,000	Apr. 1979	Mar. 2011
4713	Île de la Réunion to Île Saint-Paul	3,500,000	Feb. 1978	Aug. 2010
4714	Cocos (Keeling) Islands to Île Saint Paul	3,500,000	Feb. 1978	Oct. 2005
4794	Great Lakes	1,584,000	Oct. 2008	-
Continuation ^(A)				
4801	Mexican Border to Dixon Entrance	3,500,000	Dec. 1981	July 2003
4802	United States and Mexico	3,500,000	Dec. 1983	Feb. 2011
4805	Hawaiian Islands to the Aleutian Trench	3,500,000	May 1982	Mar. 2011
4806	San Francisco and Vancouver Island to Mendocino Fracture Zone	3,500,000	May 1982	Feb. 2011
4807	San Francisco to Hawaii	3,500,000	May 1982	Feb. 2011
4808	Hawaii to the Clipperton Fracture Zone	3,500,000	Apr. 1985	Feb. 2011
4809	Hawaiian Islands	3,500,000	Dec. 1981	Apr. 2008
4810	Dixon Entrance to Unimak Pass	3,500,000	Dec. 1980	Feb. 2011
4811	Mexico to Ecuador	3,500,000	Dec. 1983	July 2003
4813	Bering Sea – Southern Part	3,500,000	Dec. 1980	Jan. 2002
4814	Bering Sea – Northern Part	3,500,000	Dec. 1980	Jan. 2002
4900	Ross Sea	2,000,000	Mar. 1999	Nov. 2003
4907	Approaches to the Antarctic Peninsula	2,000,000	Dec. 2000	Nov. 2010

Key to symbols

○ ARCS version. See page 14.

■ International Chart. See pages 176-177.



The World -
Index of Charts
at 1:3,500,000
or comparable
scale

Notes

For Thematic Charts eg. Routing, Magnetic etc charts see Part 4.

See Limits of Admiralty Chart Indexes, Part 3.